

 **Extraflame**



**Manual
wiring diagrams**





Index

VENTILATE	
REVISION 001	4
REVISION 002	6
COMFORT MAXI	
REVISION 001	8
REVISION 002	10
TOSCA PLUS	
REVISION 001	12
LP20	
REVISION 001	14
COMFORT IDRO	
REVISION 001	16
COMFORT PLUS	
REVISION 001	18
ECOLOGICA IDRO	
REVISION 001	20
DELIZIA	
REVISION 001	22
LUCREZIA IDRO - LUCREZIA STEEL	
REVISION 001	24
COMFORT MINI - COMFORT CRYSTAL	
REVISION 001	26
REVISION 002	28
COMFORT P80	
REVISION 001	30
TC30	
REVISION 001	32
TP30	
REVISION 001	36

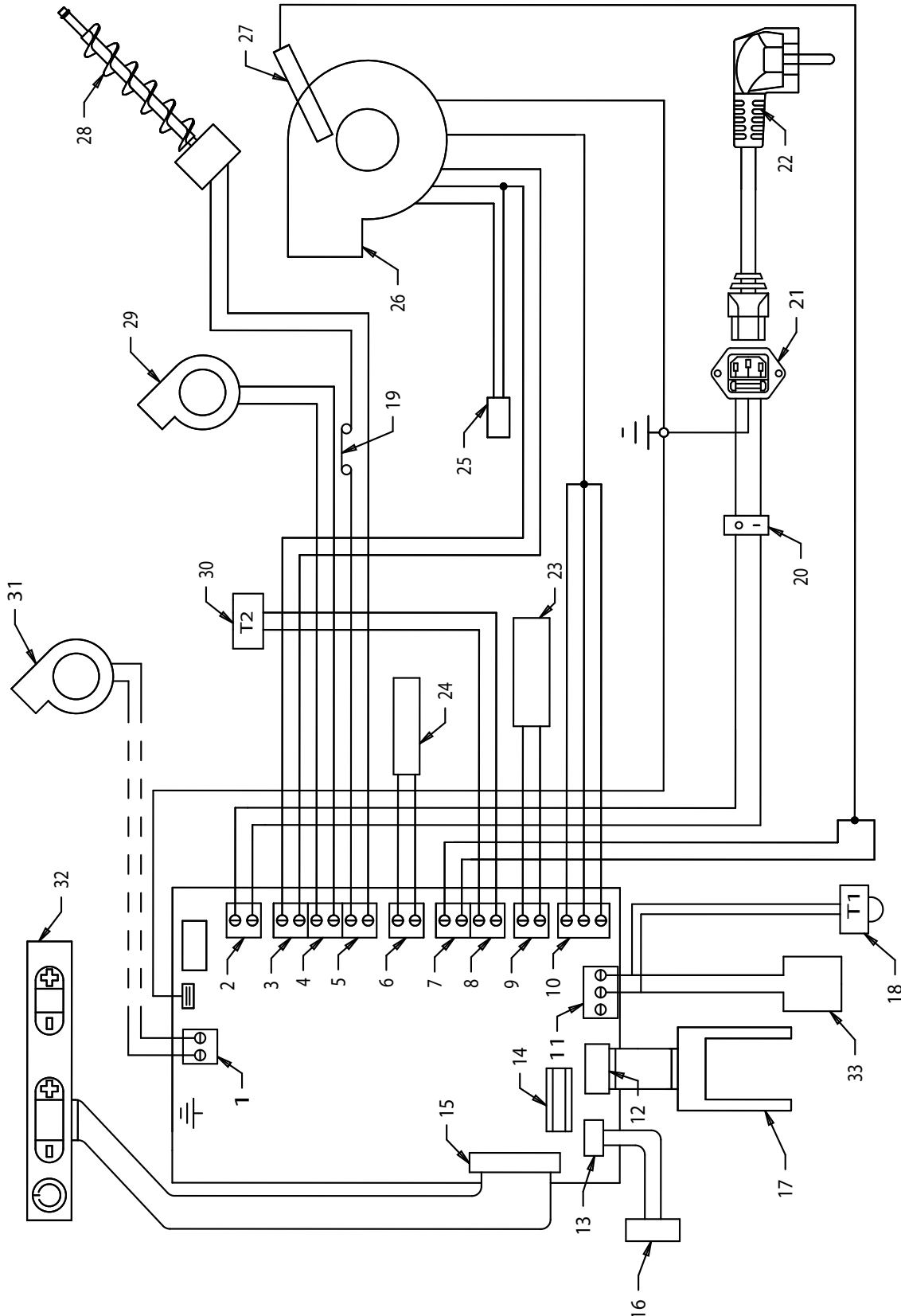


Numbering	Description
1	Ducting motor clamp (Divina Plus only)
2	Circuit board power supply clamp
3	Flue gas exhaust motor power supply clamp
4	Tangential fan power supply clamp
5	Pellet feeder motor reducer power supply clamp
6	Ignition electrode power supply clamp
7	Flue gas probe input clamp
8	External thermostat input clamp
9	Room probe input clamp
10	Encoder input clamp
11	Probe/thermostat input clamp
12	Depression sensor input clamp
13	Serial port clamp
14	Weekly programmer clamp
15	Display clamp
16	Serial port
17	Depression control circuit board
18	External thermostat for ducting motor (Divina Plus only)
19	Safety bulb thermostat at 85°C
20	Bipolar switch
21	Three pole network plug
22	Power supply cable
23	Room thermostat probe
24	Ignition electrode
25	Flue gas exhaust motor condenser
26	Flue gas exhaust motor
27	Flue gas probe
28	Pellet feeder motor reducer
29	Tangential fan
30	External thermostat (optional)
31	Ducting motor (Divina Plus only)
32	Display
33	Pellet tank temperature probe (Graziosa and Irina only)



REVISION 002

Babyfiamma - Preziosa - Isabella - Karolina - Graziosa - Bella - Bella Lux - Duchessa - Duchessa Steel - Contessa - Falò 1XLP - Falò 1CP - Falò 2CP - Esmeralda - Clementina - Divina - Divina Plus - Divina Steel - Irina - Ecologica

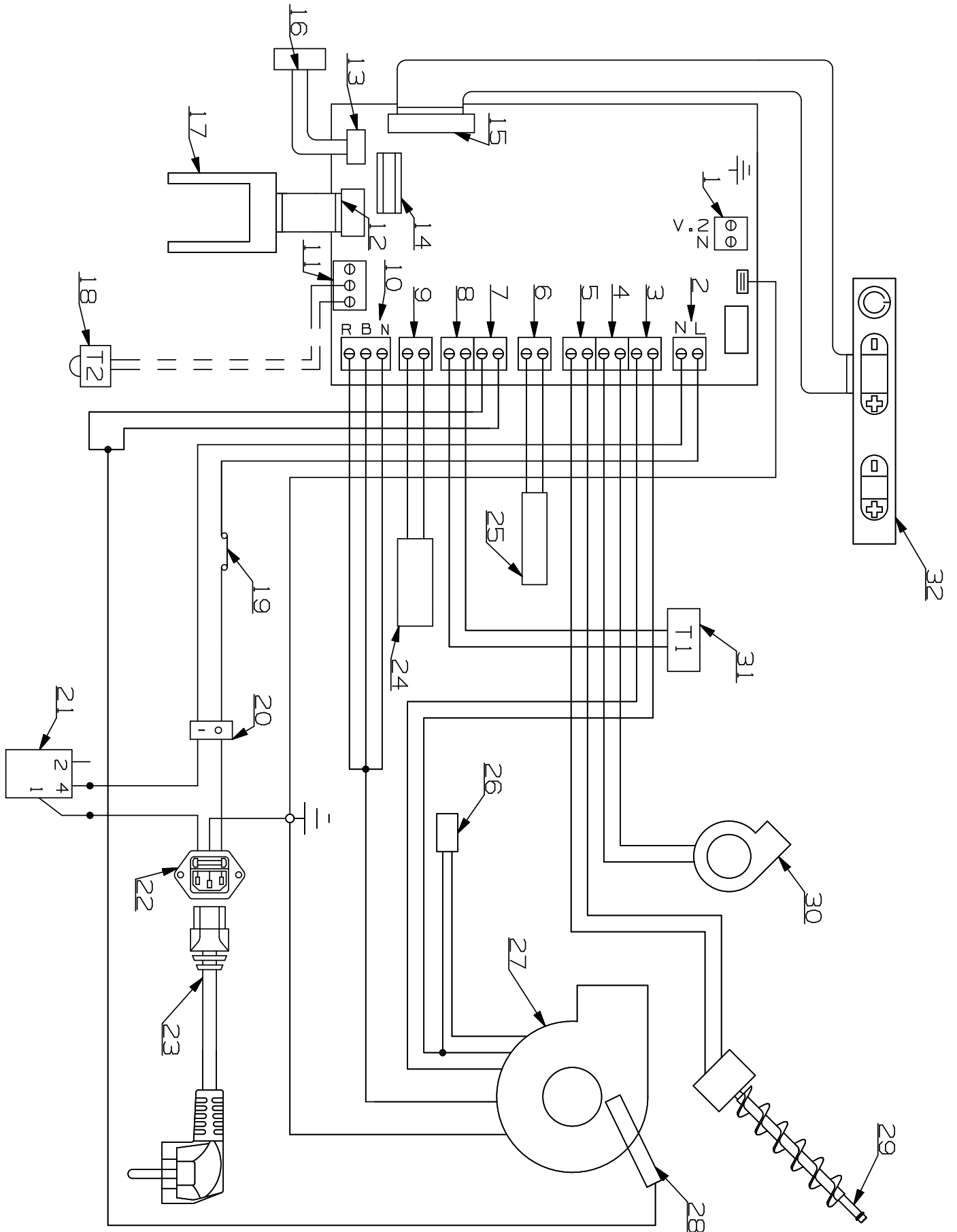




Numbering	Description
1	Ducting motor clamp (Divina Plus only)
2	Circuit board power supply clamp
3	Flue gas exhaust motor power supply clamp
4	Tangential fan power supply clamp
5	Pellet feeder motor reducer power supply clamp
6	Ignition electrode power supply clamp
7	Flue gas probe inlet clamp
8	External thermostat input clamp
9	Room probe input clamp
10	Encoder input clamp
11	Probe/thermostat input clamp
12	Depression sensor input clamp
13	Serial port clamp
14	Weekly programmer clamp
15	Display clamp
16	Serial port
17	Depression control circuit board
18	External thermostat for ducting motor (Divina Plus only)
19	Safety bulb thermostat
20	Bipolar switch
21	Three pole network plug
22	Power supply cable
23	Room thermostat probe
24	Ignition electrode
25	Flue gas exhaust motor condenser
26	Flue gas exhaust motor
27	Flue gas probe
28	Pellet feeder motor reducer
29	Tangential an
30	External thermostat (optional)
31	Ducting motor (Divina Plus only)
32	Display
33	Pellet tank temperature probe (Graziosa, Esmeralda and Irina only)



REVISION 001

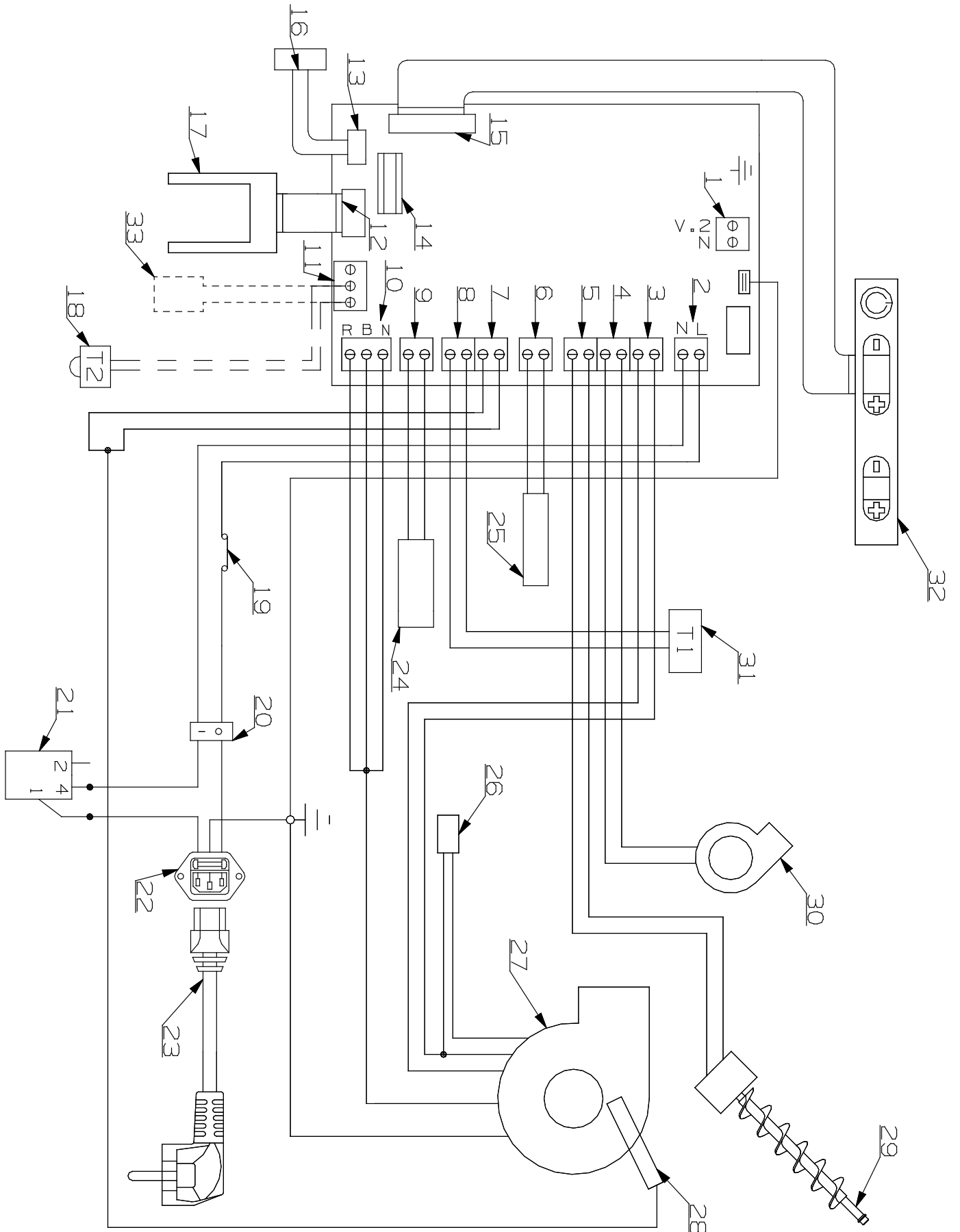




Numbering	Description
1	Free clamp
2	Circuit board power supply clamp
3	Flue gas exhaust motor power supply clamp
4	Tangential fan power supply clamp
5	Pellet feeder motor reducer power supply clamp
6	Ignition electrode power supply clamp
7	Flue gas probe input clamp
8	External thermostat input clamp
9	Room probe input clamp
10	Encoder input clamp
11	Free clamp
12	Depression sensor input clamp
13	Serial port clamp
14	Weekly programmer clamp
15	Display connector
16	Serial port
17	Depression control circuit board
18	Jumper
19	Safety bulb thermostat at 85°C
20	Bipolar switch
21	Power supply safety micro-switch
22	Three pole network plug
23	Power supply cable
24	Room thermostat probe
25	Ignition electrode
26	Flue gas exhaust motor condenser
27	Flue gas exhaust motor
28	Flue gas probe
29	Pellet feeder motor reducer
30	Tangential fan
31	External thermostat (optional)
32	Display



REVISION 002

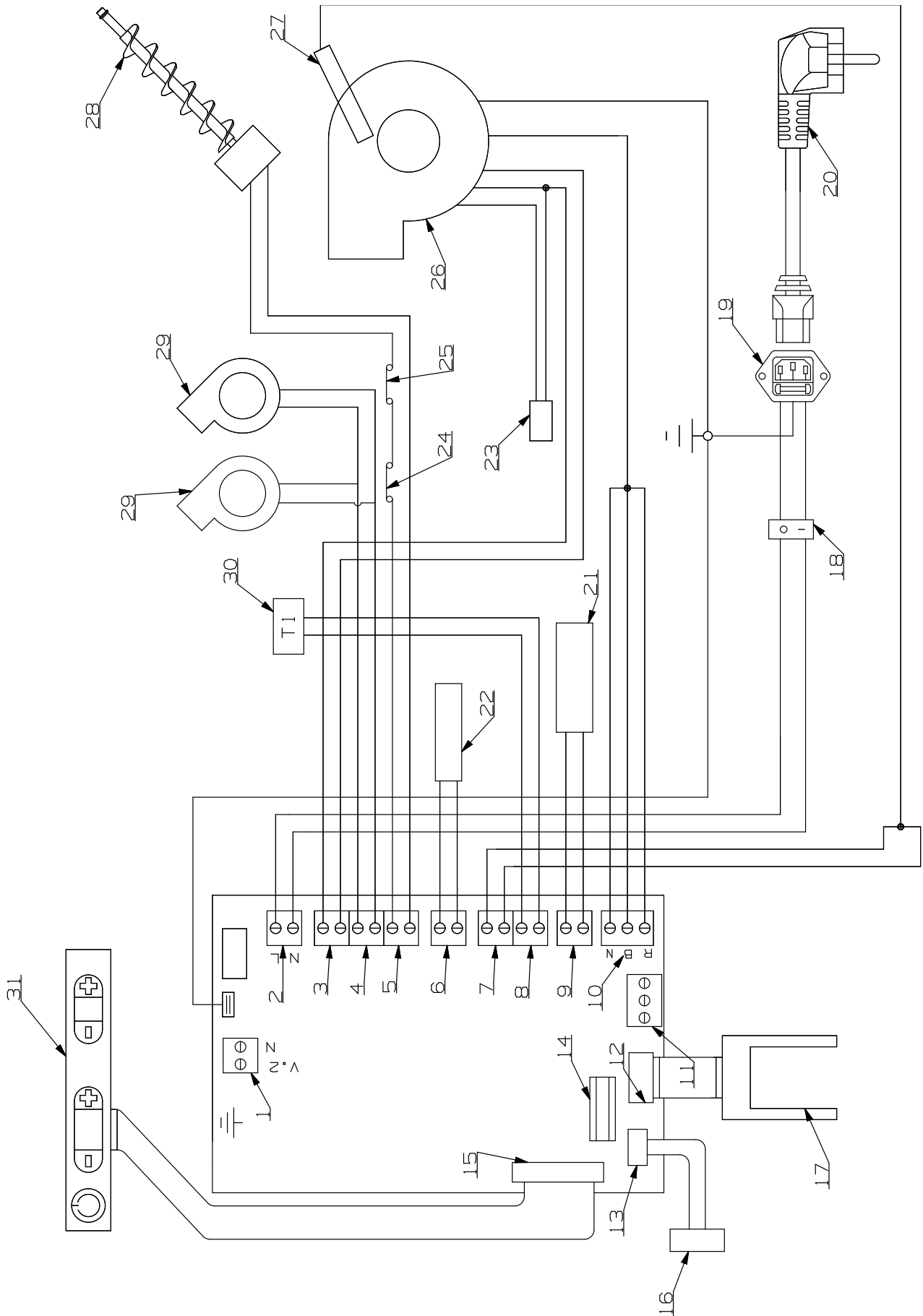




Numbering	Description
1	Free clamp
2	Circuit board power supply clamp
3	Flue gas exhaust motor power supply clamp
4	Tangential fan power supply clamp
5	Pellet feeder motor reducer power supply clamp
6	Ignition electrode power supply clamp
7	Flue gas probe input clamp
8	External thermostat input clamp
9	Room probe input clamp
10	Encoder input clamp
11	Free clamp
12	Depression sensor input clamp
13	Serial port clamp
14	Weekly programmer clamp
15	Display connector
16	Serial port
17	Depression control circuit board
18	Jumper
19	Safety bulb thermostat at 85°C
20	Bipolar switch
21	Power supply safety micro-switch
22	Three pole network plug
23	Power supply cable
24	Room thermostat probe
25	Ignition electrode
26	Flue gas exhaust motor condenser
27	Flue gas exhaust motor
28	Flue gas probe
29	Pellet feeder motor reducer
30	Tangential fan
31	External thermostat (optional)
32	Display
33	Tank temperature probe



REVISION 001

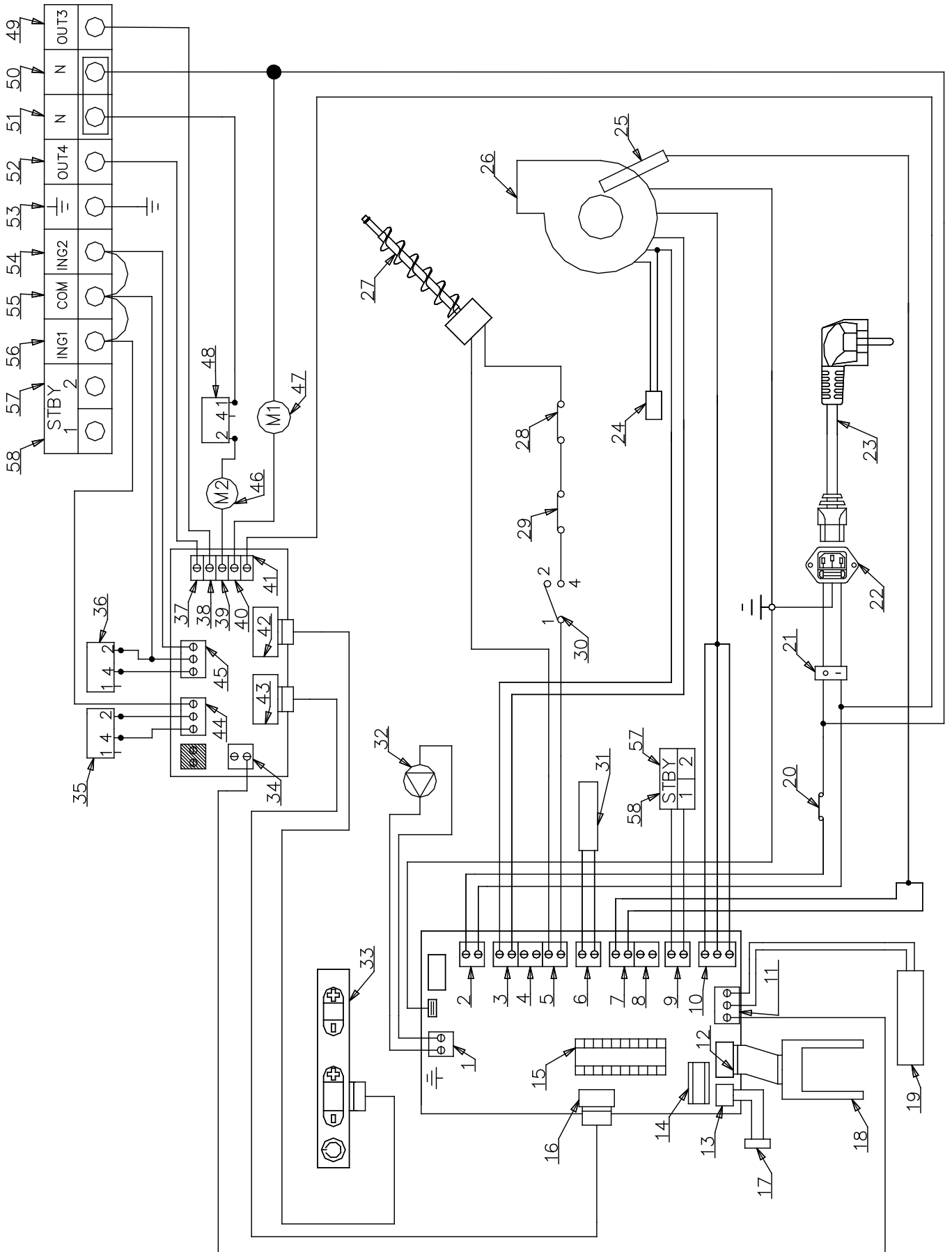




Numbering	Description
1	Free clamp
2	Circuit board power supply clamp
3	Flue gas exhaust motor power supply clamp
4	Centrifugal motors power supply clamp
5	Pellet feeder motor reducer power supply clamp
6	Ignition electrode power supply clamp
7	Flue gas probe input clamp
8	External thermostat input clamp
9	Room probe input clamp
10	Encoder input clamp
11	Free clamp
12	Depression sensor input clamp
13	Serial port clamp
14	Weekly programmer clamp
15	Display connector
16	Serial port
17	Depression control circuit board
18	Bipolar switch
19	Three pole network plug
20	Power supply cable
21	Room thermostat probe
22	Ignition electrode
23	Flue gas exhaust motor condenser
24	Door safety micro-switch
25	Safety bulb thermostat at 85°C
26	Flue gas exhaust motor
27	Flue gas probe
28	Pellet feeding motor reducer
29	Centrifugal motor
30	External thermostat (optional)
31	Display



REVISION 001

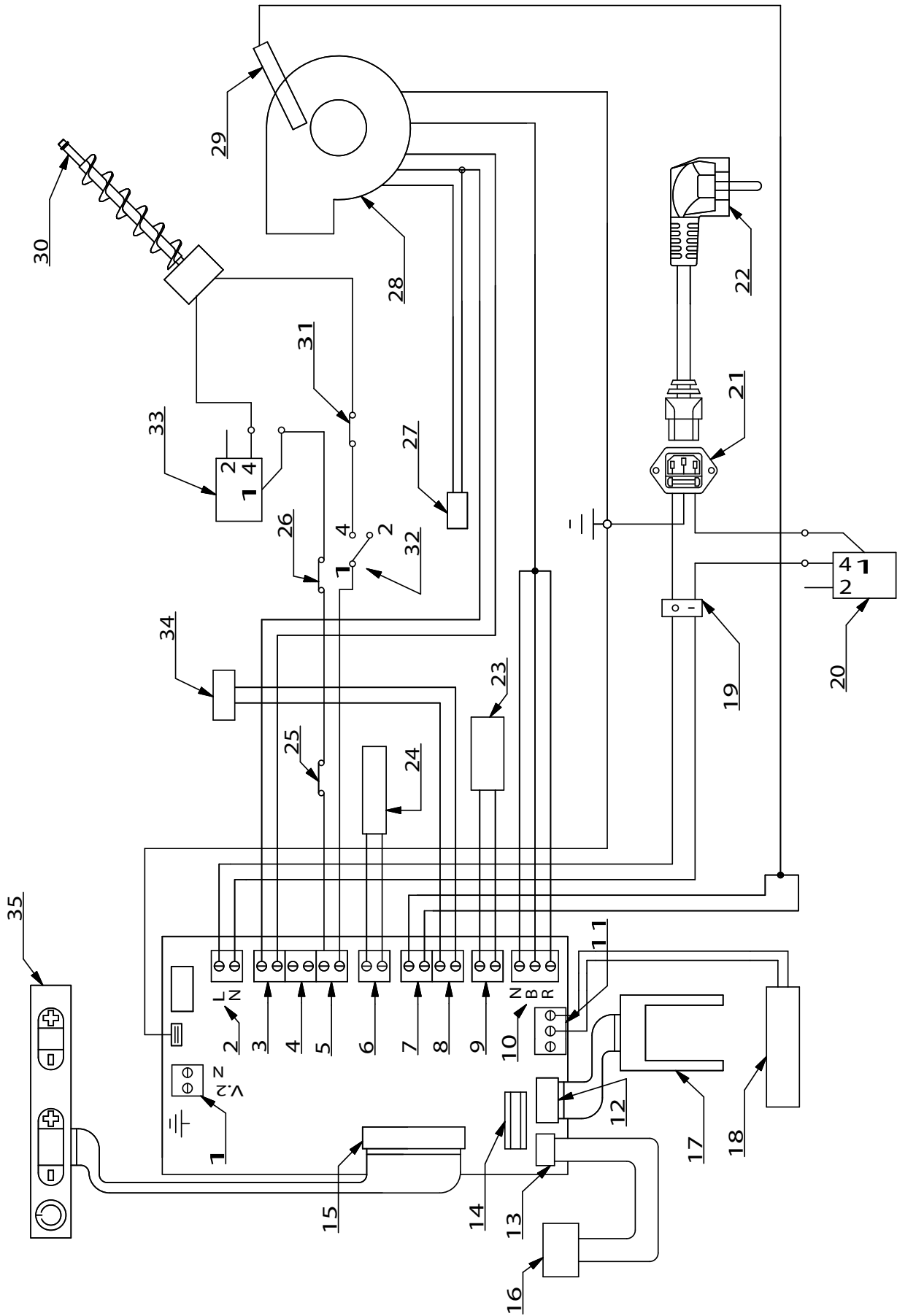




Numbering	Description	Numbering	Description
1	Pump power supply clamp	30	Minimum pressure switch
2	Circuit board power supply clamp	31	Ignition electrode
3	Flue gas exhaust motor power supply clamp	32	Circulation pump
4	Free clamp	33	Display
5	Pellet feeding motor reducer power supply clamp	34	Additional circuit board power supply clamp
6	Ignition electrode power supply clamp	35	Exchanger cleaning motor end-run micro switch
7	Flue gas probe input clamp	36	Brazier cleaning motor end-run micro switch
8	Free clamp	37	Terminal board (see 52)
9	Terminal board (see 57 and 58)	38	Terminal board (see 49)
10	Encoder input clamp	39	Brazier cleaning motor power supply clamp
11	Additional circuit board power supply (phase) clamp + water probe input clamp	40	Exchanger cleaning motor power supply clamp
12	Depression sensor input clamp	41	Additional circuit board power supply (neutral) clamp
13	Serial port clamp	42	Display connector
14	Weekly programmer clamp	43	Circuit board data communication connector
15	Microprocessor base	44	Exchanger cleaning end-run clamp + Terminal board (see 56)
16	Circuit board data communication connector	45	Brazier cleaning end-run clamp + Terminal board (see 54)
17	Serial port	46	Brazier cleaning motor
18	Depression control circuit board	47	Exchanger cleaning motor
19	Water probe	48	Door safety micro switch
20	Safety bulb thermostat at 85°C	49	Secondary clamp output (optional)
21	Bipolar switch	50	Neutral clamp
22	Three polar plug	51	Neutral clamp
23	Power supply cable	52	Primary clamp output (optional)
24	Flue gas exhaust motor condenser	53	Earthing clamp
25	Flue gas probe	54	Secondary clamp input external contact (optional)
26	Flue gas exhaust motor	55	"Common" clamp for inputs
27	Pellet feeding motor reducer	56	Primary clamp input external contact (optional)
28	Safety bulb thermostat at 100°C	57	Priority clamp input external contact (optional)
29	Maximum pressure switch	58	



REVISION 001

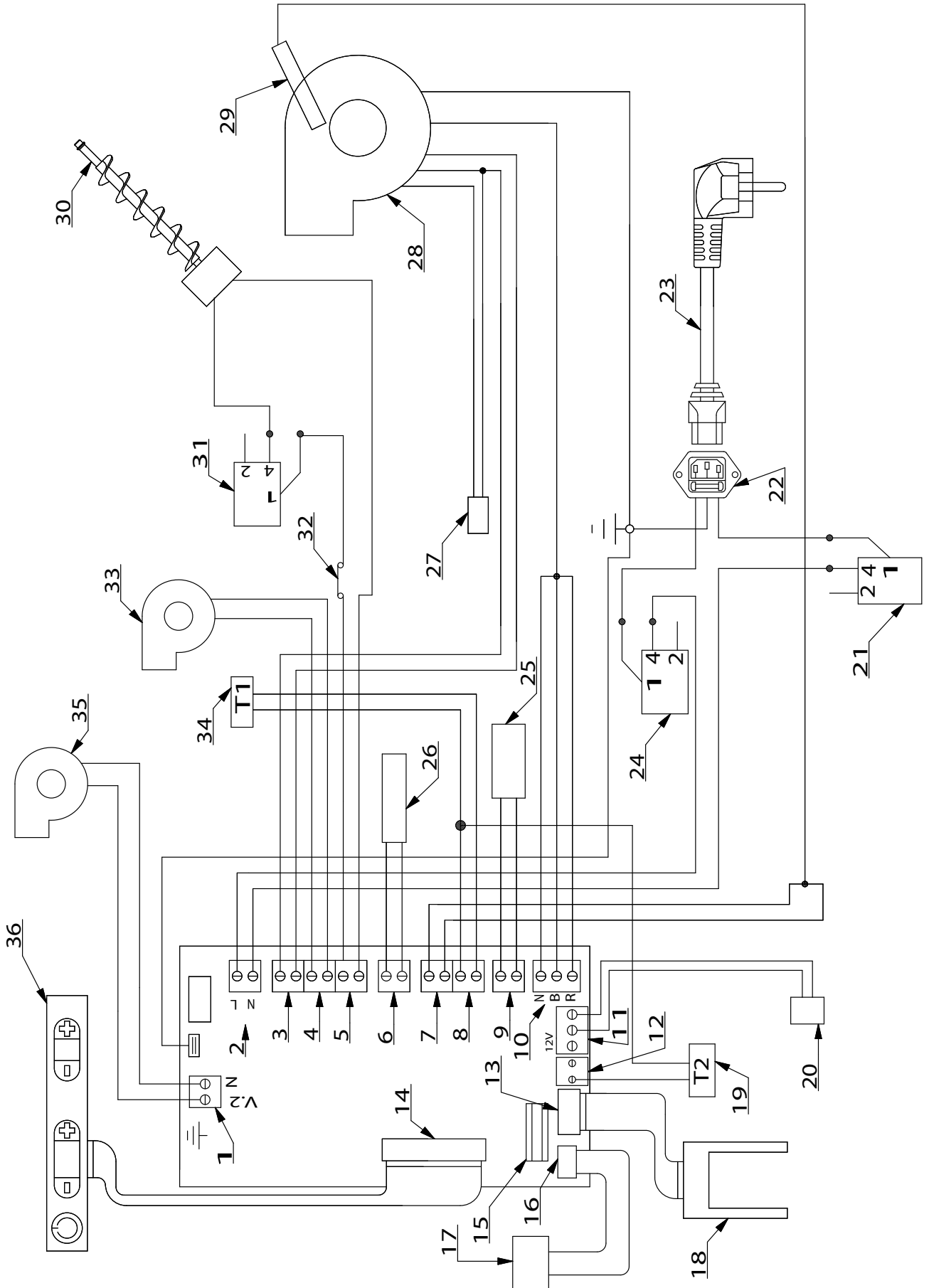




Numbering	Description
1	Pump power supply clamp
2	Circuit board power supply clamp
3	Flue gas exhaust motor power supply clamp
4	Clamp not used
5	Pellet feeding motor reducer power supply clamp
6	Ignition electrode power supply clamp
7	Flue gas probe input clamp
8	External thermostat input clamp
9	Room probe input clamp
10	Encoder input clamp
11	Water probe input clamp
12	Depression sensor input clamp
13	Serial port clamp
14	Weekly programmer clamp
15	Serial port connector
16	Serial port
17	Depression control circuit board
18	Water probe
19	Bipolar switch
20	Power supply safety micro switch
21	Three pole network plug
22	Power supply cable
23	Room thermostat probe
24	Ignition electrode
25	Safety bulb thermostat at 85°C
26	Safety bulb thermostat at 100°C
27	Flue gas exhaust motor condenser
28	Flue gas exhaust motor
29	Flue gas probe
30	Pellet feeding motor reducer
31	Maximum pressure switch
32	Minimum pressure switch
33	Door safety micro switch
34	External thermostat (optional)
35	Display



REVISION 001

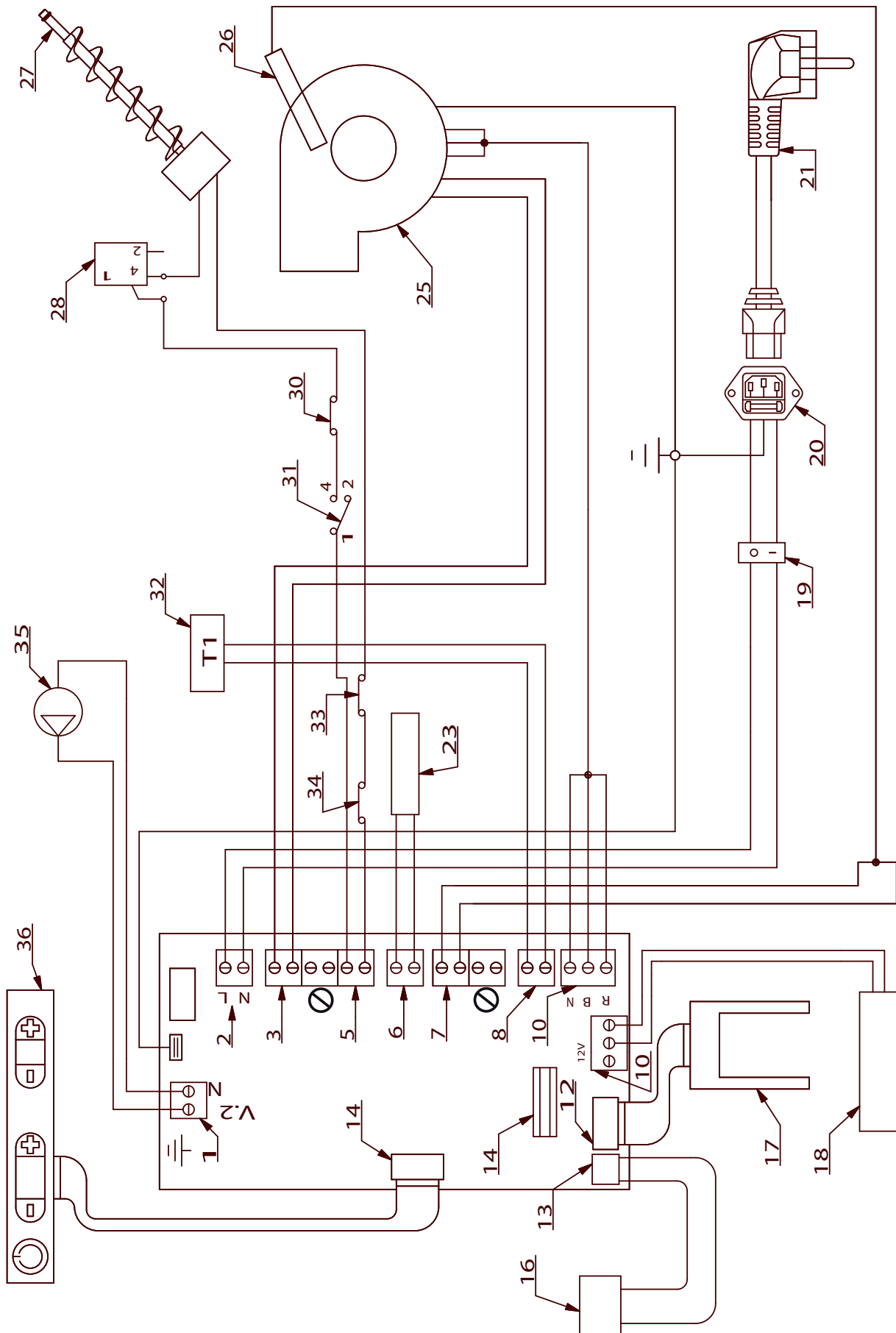




Numbering	Description
1	Ducting centrifugal motor power supply clamp
2	Circuit board power supply clamp
3	Flue gas exhaust motor power supply clamp
4	Tangential fan power supply clamp
5	Pellet feeding motor reducer power supply clamp
6	Ignition electrode power supply clamp
7	Flue gas probe input clamp
8	External thermostat input clamp
9	Room probe input clamp
10	Encoder input clamp
11	Pellet tank temperature probe connector
12	External thermostat for ducting input clamp
13	Depression control circuit board connector
14	Display connector
15	Weekly programmer clamp
16	Serial port connector
17	Serial port
18	Depression control circuit board
19	External thermostat for ducting
20	Tank probe
21	Power supply safety micro switch
22	Three pole network plug
23	Power supply cable
24	Power supply safety micro switch
25	Room thermostat probe
26	Ignition electrode
27	Flue gas exhaust motor condenser
28	Flue gas exhaust motor
29	Flue gas probe
30	Pellet feeding motor reducer
31	Door safety micro switch
32	Safety bulb thermostat at 85°C
33	Tangential fan
34	External thermostat (optional)
35	Centrifugal fan for ducting
36	Display



Numbering	Description
1	Pump power supply clamp
2	Circuit board power supply clamp
3	Flue gas exhaust motor power supply clamp
4	Tangential fan power supply clamp
5	Pellet feeding motor reducer power supply clamp
6	Ignition electrode power supply clamp
7	Flue gas probe input clamp
8	External thermostat input clamp
9	Room probe input clamp
10	Encoder input clamp
11	Water probe input clamp
12	Depression sensor input clamp
13	Serial port clamp
14	Weekly programmer clamp
15	Display connector
16	Serial port
17	Depression control circuit board
18	Water probe
19	Bipolar switch
20	Three pole network plug
21	Power supply cable
22	Room thermostat probe
23	Ignition electrode
24	Flue gas exhaust motor condenser
25	Flue gas exhaust motor
26	Flue gas probe
27	Pellet feeding motor reducer
28	Door safety micro switch
29	Tangential fan
30	Maximum pressure switch
31	Minimum pressure switch
32	External thermostat (optional)
33	Safety bulb thermostat at 85°C
34	Safety bulb thermostat at 100° C
35	Pump
36	Display

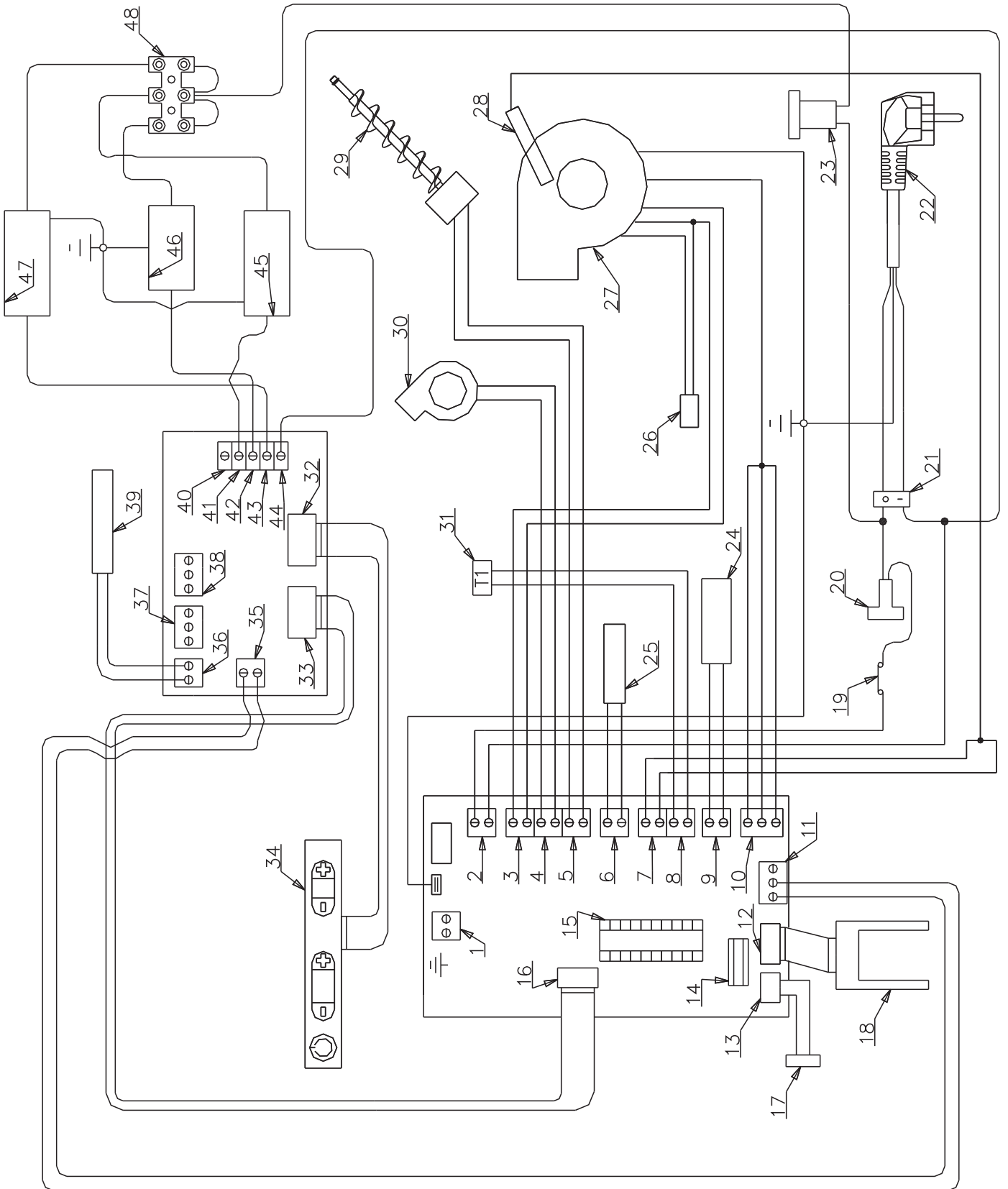
REVISION 001



Numbering	Description
1	Pump power supply clamp
2	Circuit board power supply clamp
3	Flue gas exhaust motor power supply clamp
4	Tangential fan power supply clamp
5	Pellet feeding motor reducer power supply clamp
6	Ignition electrode power supply clamp
7	Flue gas probe input clamp
8	External thermostat input clamp
9	Room probe input clamp
10	Encoder input clamp
11	Water probe input clamp
12	Depression sensor input clamp
13	Serial port clamp
14	Weekly programmer clamp
15	Display connector
16	Serial port
17	Depression control circuit board
18	Water probe
19	Bipolar switch
20	Three pole network plug
21	Power supply cable
22	Room thermostat probe
23	Ignition electrode
24	Flue gas exhaust motor condenser
25	Flue gas exhaust motor
26	Flue gas probe
27	Pellet feeding motor reducer
28	Door safety micro switch
29	Tangential fan
30	Maximum pressure switch
31	Minimum pressure switch
32	External thermostat (optional)
33	Safety bulb thermostat at 85°C
34	Safety bulb thermostat at 100° C
35	Pump
36	Display



REVISION 001

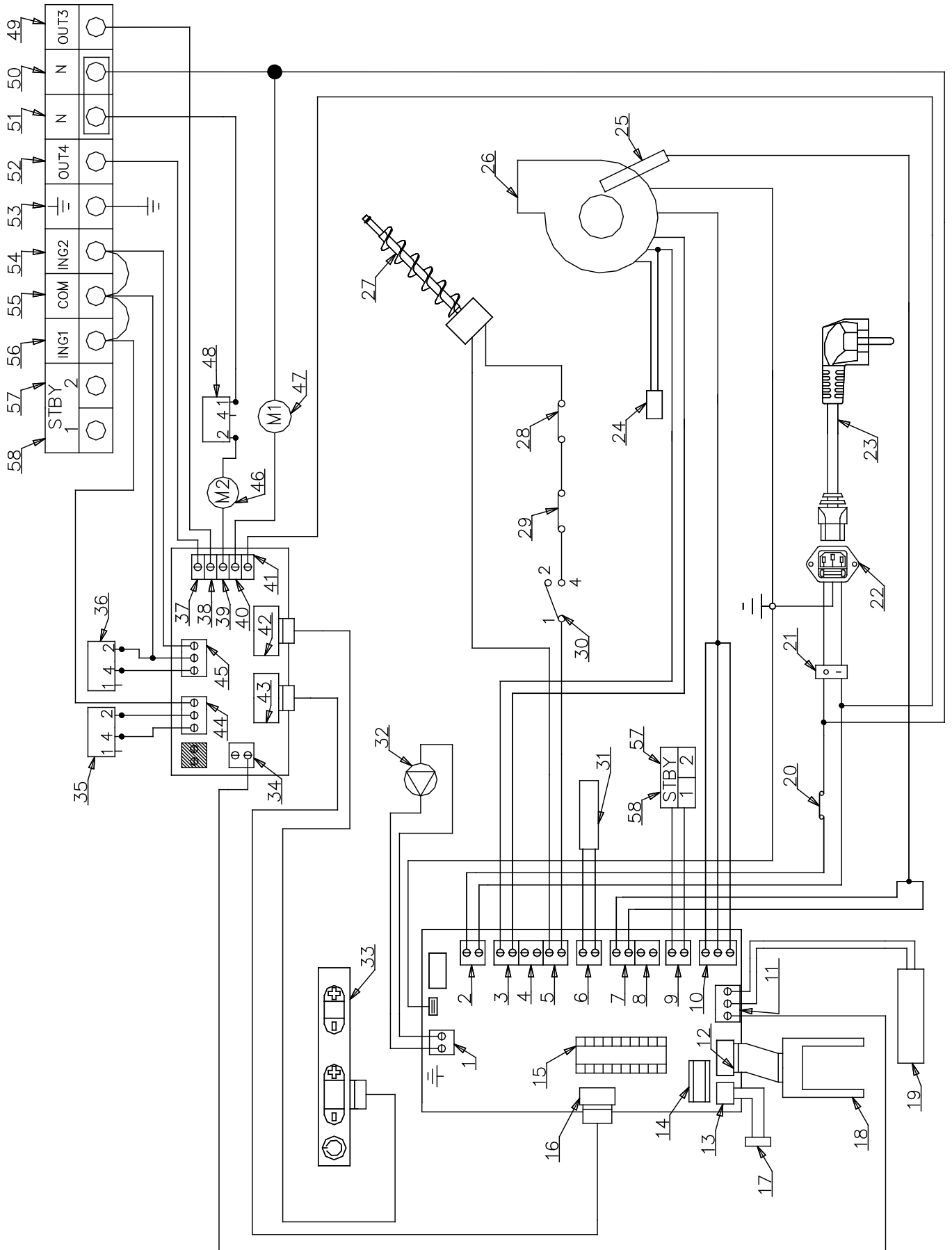




Numbering	Description
1	Free clamp
2	Circuit board power supply clamp
3	Flue gas exhaust motor power supply clamp
4	Tangential fan power supply clamp
5	Pellet feeding motor reducer power supply clamp
6	Ignition electrode power supply clamp
7	Flue gas probe input clamp
8	External thermostat input clamp
9	Room probe input clamp
10	Encoder input clamp
11	Additional circuit board power supply clamp
12	Depression sensor input clamp
13	Serial port clamp
14	Weekly programmer clamp
15	Microprocessor base
16	Circuit board data communication connector
17	Serial port
18	Depression control circuit board
19	Safety bulb thermostat at 85°C
20	Fuse-holder with delayed 250V 2.5A fuse
21	Bipolar switch
22	Power supply cable
23	Fuse-holder with delayed 250V 12A fuse
24	Room thermostat probe
25	Ignition electrode
26	Flue gas exhaust motor condenser
27	Flue gas exhaust motor
28	Flue gas probe
29	Pellet feeding motor reducer
30	Tangential fan
31	External thermostat (optional)
32	Display clamp
33	Circuit board data communication connector
34	Display
35	Additional circuit board power supply clamp
36	Oven temperature probe input clamp
37	Free clamp
38	Free clamp
39	Oven temperature probe
40	Free clamp
41	1500W oven resistance power supply clamp
42	Oven light power supply clamp
43	800W oven resistance power supply clamp
44	"Neutral" clamp for power supplies
45	1500W oven resistance
46	Oven light
47	800W oven resistance
48	Terminal board



REVISION 001

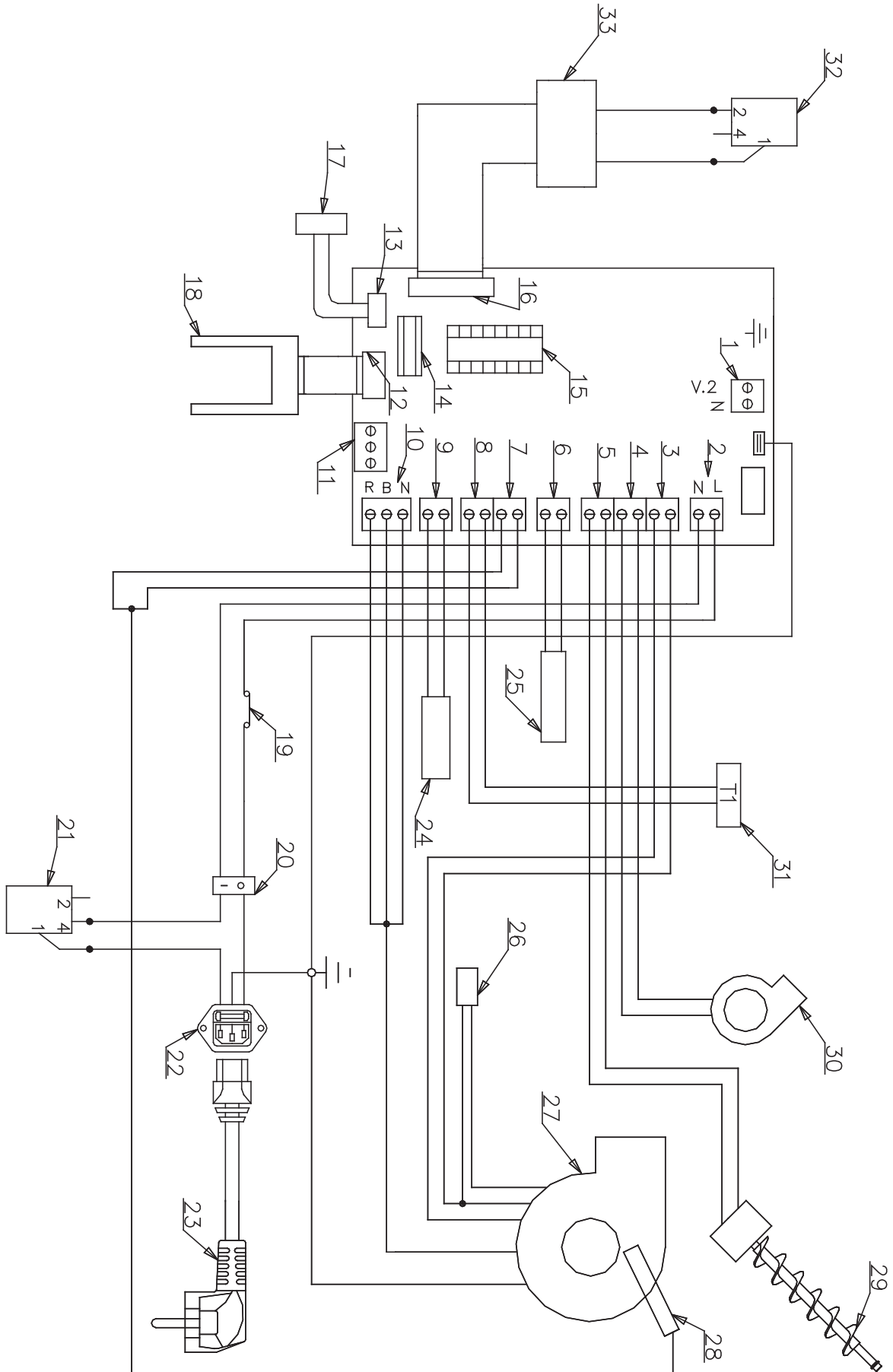




Numbering	Description	Numbering	Description
1	Pump power supply clamp	30	Minimum pressure switch
2	Circuit board power supply clamp	31	Ignition electrode
3	Flue gas exhaust motor power supply clamp	32	Circulation pump
4	Free clamp	33	Display
5	Pellet feeding motor reducer power supply clamp	34	Additional circuit board power supply clamp
6	Ignition electrode power supply clamp	35	Exchanger cleaning motor end-run micro switch
7	Flue gas probe input clamp	36	Brazier cleaning motor end-run micro switch
8	Free clamp	37	Terminal board (see 52)
9	Terminal board (see 57 and 58)	38	Terminal board (see 49)
10	Encoder input clamp	39	Brazier cleaning motor power supply clamp
11	Additional circuit board power supply (phase) clamp + water probe input clamp	40	Exchanger cleaning motor power supply clamp
12	Depression sensor input clamp	41	Additional circuit board power supply (neutral) clamp
13	Serial port clamp	42	Display connector
14	Weekly programmer clamp	43	Circuit board data communication connector
15	Microprocessor base	44	Exchanger cleaning end-run clamp + terminal board (see 56)
16	Circuit board data communication connector	45	Brazier cleaning end-run clamp + terminal board (see 54)
17	Serial port	46	Brazier cleaning motor
18	Depression control circuit board	47	Exchanger cleaning motor
19	Water probe	48	Door safety micro switch
20	Safety bulb thermostat at 85°C	49	Secondary clamp output (optional)
21	Bipolar switch	50	Neutral clamp
22	Three pole plug	51	Neutral clamp
23	Power supply cable	52	Primary clamp output (optional)
24	Flue gas exhaust motor condenser	53	Earthing clamp
25	Flue gas probe	54	Secondary clamp input external contact (optional)
26	Flue gas exhaust motor	55	"Common" clamp for inputs
27	Pellet feeding motor reducer	56	Primary clamp input external contact (optional)
28	Safety bulb thermostat at 100°C	57	Priority clamp input external contact (optional)
29	Maximum pressure switch	58	



REVISION 001

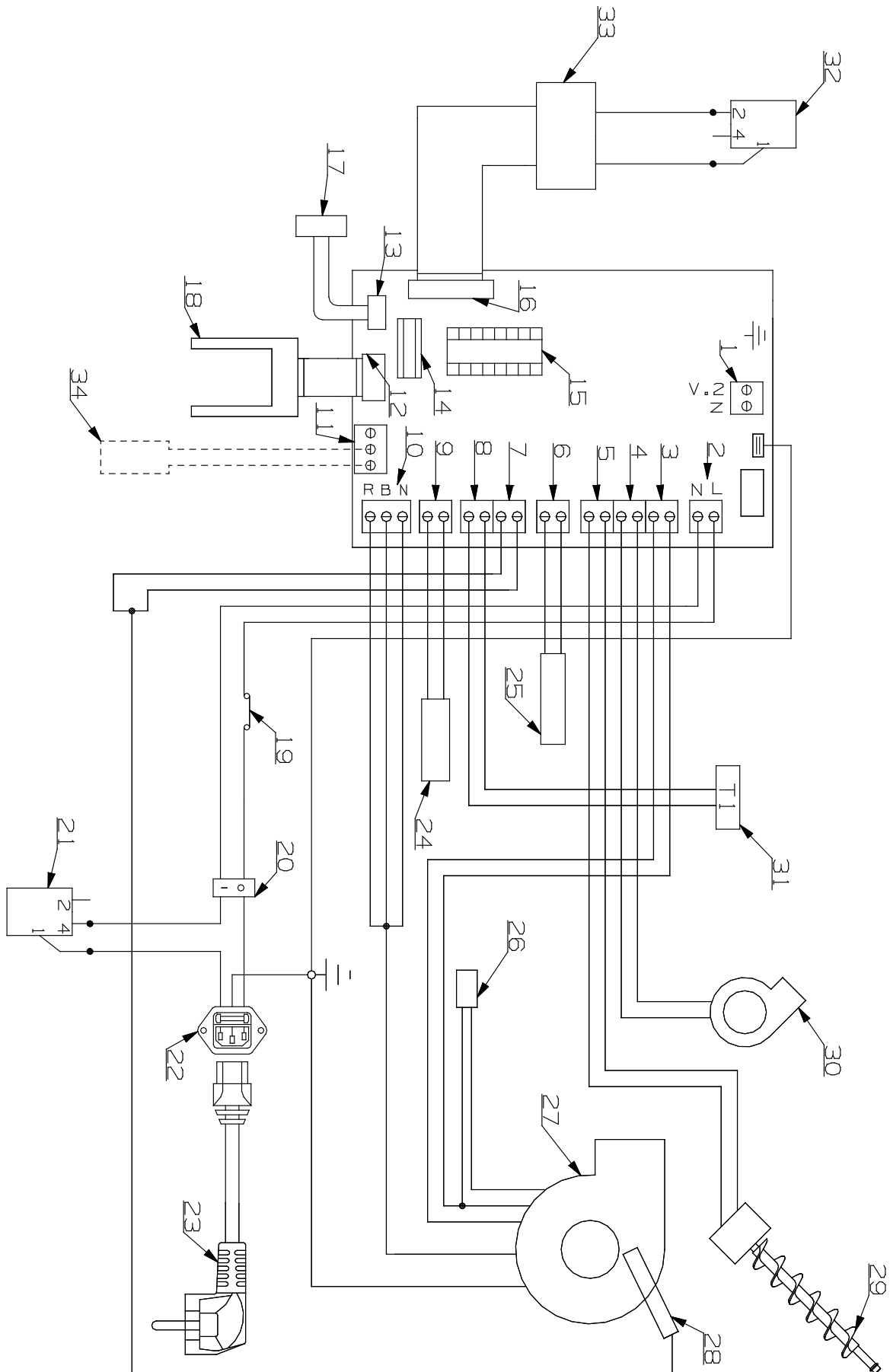




Numbering	Description
1	Free clamp
2	Circuit board power supply clamp
3	Flue gas exhaust motor power supply clamp
4	Tangential fan power supply clamp
5	Pellet feed motor reducer power supply clamp
6	Ignition electrode power supply clamp
7	Flue gas probe input clamp
8	External thermostat input clamp
9	Room probe input clamp
10	Encoder input clamp
11	Free clamp
12	Depression sensor input clamp
13	Serial port clamp
14	Weekly programmer clamp
15	Microprocessor base
16	Rx/tx circuit board connector
17	Serial port
18	Depression control circuit board
19	Safety bulb thermostat at 85°C
20	Bipolar switch
21	Power supply safety micro switch
22	Three pole network plug
23	Power supply cable
24	Room thermostat probe
25	Ignition electrodes
26	Flue gas exhaust motor condenser
27	Flue gas exhaust motor
28	Flue gas probe
29	Pellet feed motor reducer
30	Tangential fan
31	External thermostat (optional)
32	Door safety micro switch
33	Rx/tx circuit board



REVISION 002

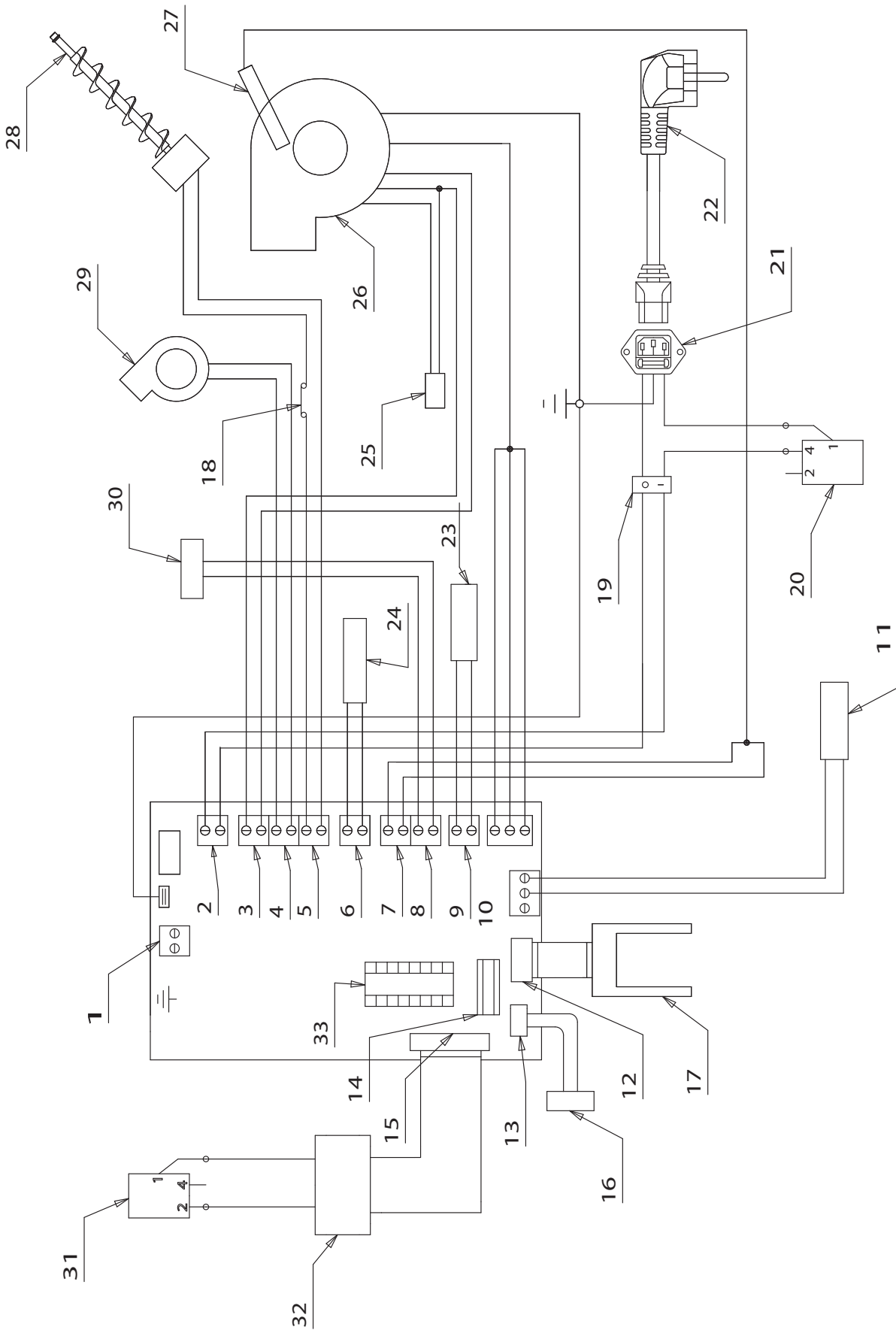




Numbering	Description
1	Free clamp
2	Circuit board power supply clamp
3	Flue gas exhaust motor power supply clamp
4	Tangential fan power supply clamp
5	Pellet feed motor reducer power supply clamp
6	Ignition electrode power supply clamp
7	Flue gas probe input clamp
8	External thermostat input clamp
9	Room probe input clamp
10	Encoder input clamp
11	Free clamp
12	Depression sensor input clamp
13	Serial port clamp
14	Weekly programmer clamp
15	Microprocessor base
16	Rx/tx circuit board connector
17	Serial port
18	Depression control circuit board
19	Safety bulb thermostat at 85°C
20	Bipolar switch
21	Power supply safety micro switch
22	Three pole network plug
23	Power supply cable
24	Room thermostat probe
25	Ignition electrodes
26	Flue gas exhaust motor condenser
27	Flue gas exhaust motor
28	Flue gas probe
29	Pellet feed motor reducer
30	Tangential fan
31	External thermostat (optional)
32	Door safety micro switch
33	Rx/tx circuit board
34	Tank temperature probe



REVISION 001

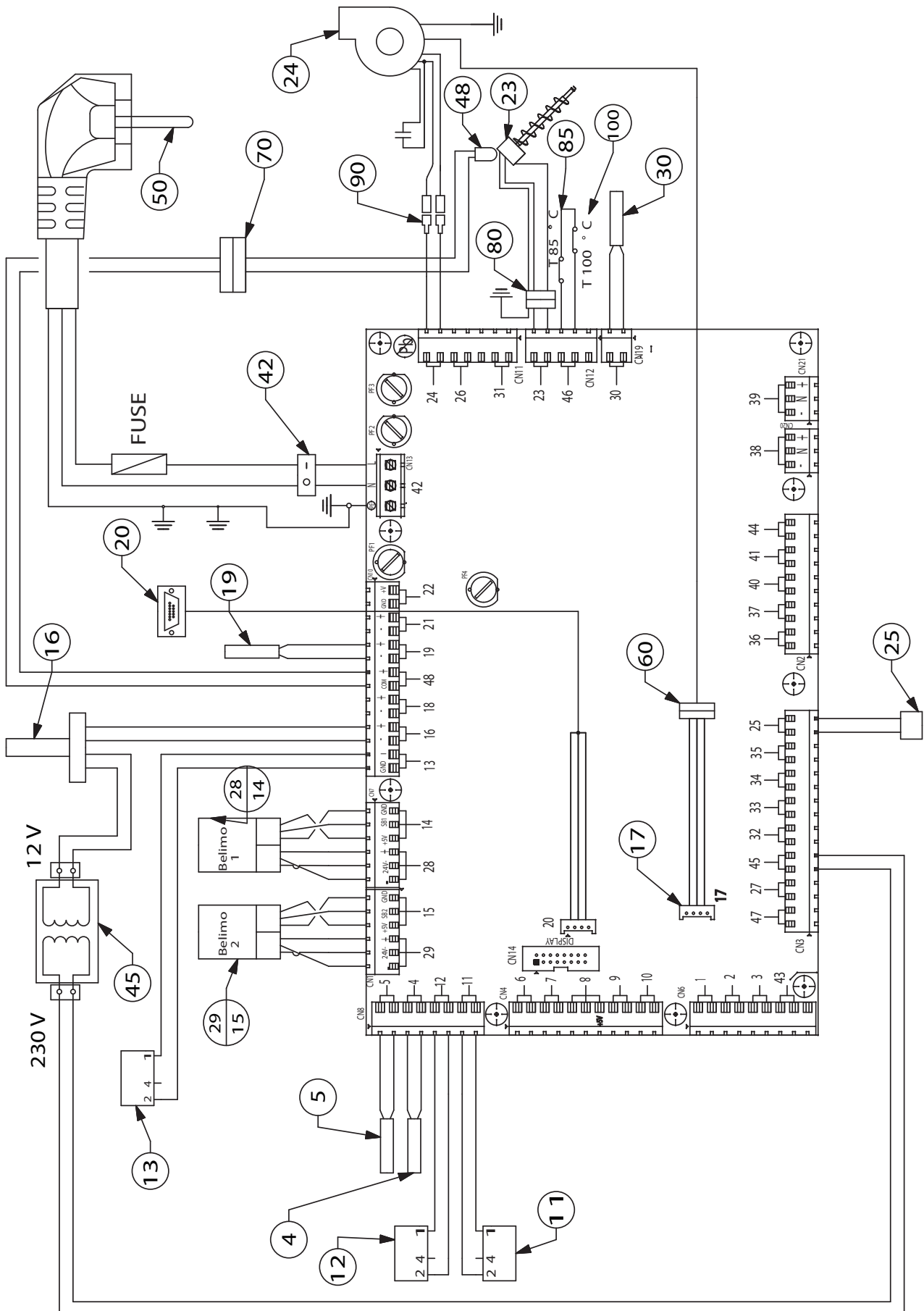




Numbering	Description
1	Free clamp
2	Circuit board power supply clamp
3	Flue gas exhaust motor power supply clamp
4	Tangential fan power supply clamp
5	Pellet feed motor reducer power supply clamp
6	Ignition electrode power supply clamp
7	Flue gas probe input clamp
8	External thermostat input clamp
9	Room probe input clamp
10	Encoder input clamp
11	Tank temperature probe
12	Depression sensor input clamp
13	Serial port clamp
14	Weekly programmer clamp
15	Rx/tx circuit board connector
16	Serial port
17	Depression control circuit board
18	Safety thermostat with bulb at 85°C
19	Bipolar switch
20	Power supply safety micro switch
21	Three pole network plug
22	Power supply cable
23	Room thermostat probe
24	Ignition electrode
25	Flue gas exhaust motor condenser
26	Flue gas exhaust motor
27	Flue gas probe
28	Pellet feed motor reducer
29	Tangential fan
30	External thermostat (optional)
31	Door safety micro switch
32	Rx/tx circuit board
33	Microprocessor base

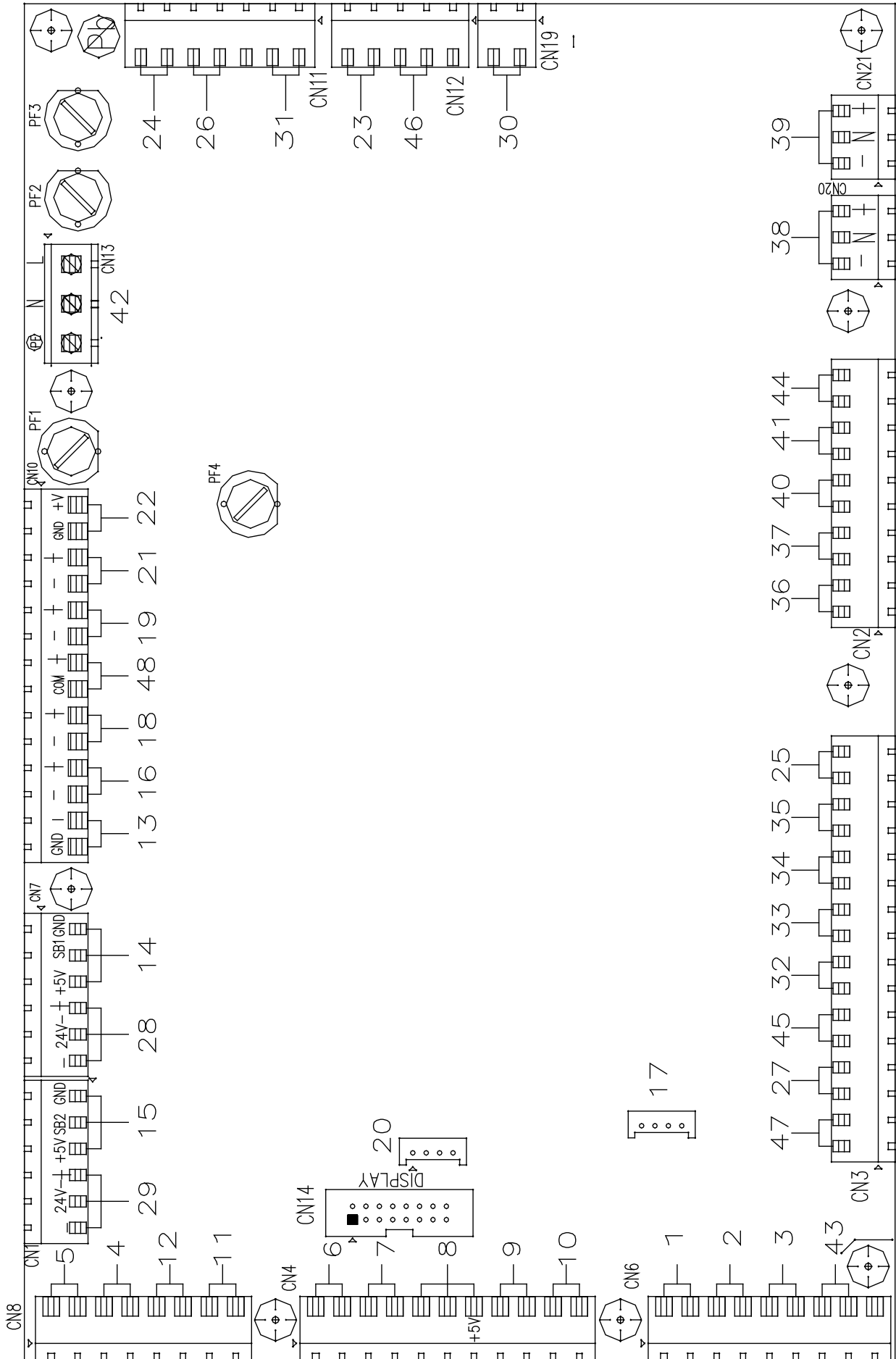


REVISION 001





Numbering	Description
29/15	Air valve 2
28/14	Air valve 1
16	Lambda probe
19	Flue gas temperature probe
20	Serial connector
50	Three pole power supply socket
42	Master bipolar switch
24	Flue gas intake motor
23	Pellet feeding motor reducer
85	Safety bulb thermostat a 85°C
100	Safety bulb thermostat AT 100°C
30	Ignition electrode
25	Trapdoor motor
45	Lambda probe power supply
11	Trapdoor positioning micro switch
12	Lower door positioning micro switch
13	Upper door positioning micro switch
4	Boiler water temperature probe
5	Pellet duct temperature probe
17	Encoder connector
70	Pellet loading motor reducer probe connector
60	Flu gas motor encoder connector
80	Pellet feeder motor reducer connector
48	Screw feed motor temperature probe
90	Fastom M/F connection power supply flue gas motor

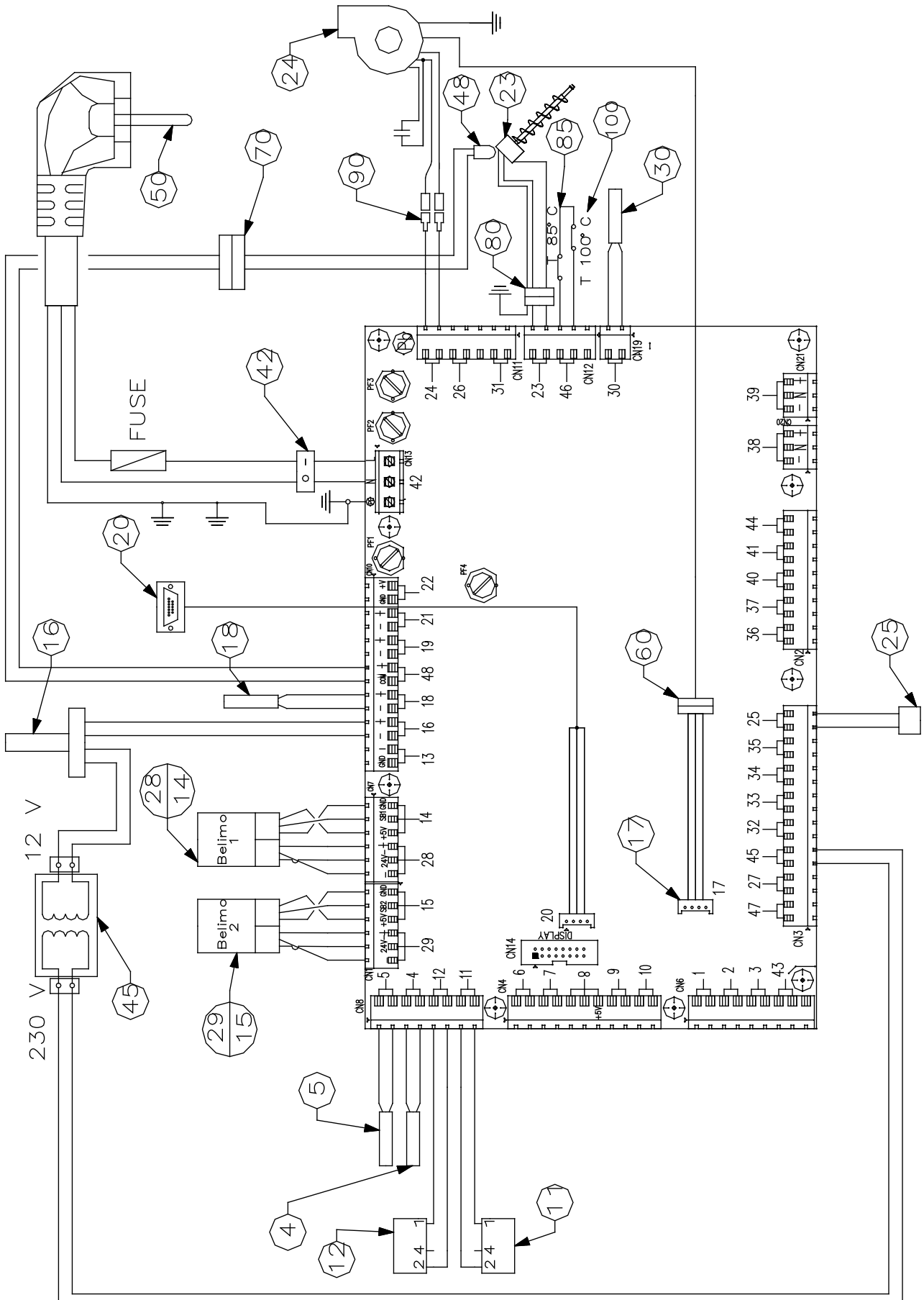




Number	PIN	Connection description	Type	Voltage
1	2	Upper puffer probe	IN	
2	2	Domestic hot water storage probe	IN	
		Heat exchanger contact for instant domestic hot water (flow switch)		
3	2	Free input/future applications	IN	
4	2	Boiler water probe	IN	
5	2	Pellet duct probe	IN	
6	2	External probe	IN	
7	2	Lower puffer probe	IN	
8	2	Free input/future applications	IN	
9	2	Zone 1 external thermostat input	IN	
10	2	Zone 2 external thermostat input	IN	
11	2	Trapdoor position micro reducer input	IN	
12	2	Lower door micro reducer input	IN	
13	2	Upper door micro reducer input	IN	
14	3	Air valve 1 motor position signal	IN	
15	3	Air valve 2 motor position signal	IN	
16	2	Lambda probe	IN	
17	3	Encoder input - flue gas motor revs reading	IN	
18	2	Flue gas probe 300°C	IN	
19	2	Flue gas probe 1100 °C	IN	
20	4	Computer serial connection	IN	
21	2	24 DC Output	OUT	24 V DC
22	2	4.5 DC Output	OUT	4,5 V DC
23	2	Pellet feeding motor power supply	OUT	230 V
24	2	Flue gas suction motor power supply	OUT	230 V
25	2	Trapdoor motor power supply	OUT	230 V
26	2	Scraper motor power supply	OUT	230 V
27	2	Free output/future applications	OUT	230 V
28	3	Air valve 1 motor power supply	OUT	24 V
29	3	Air valve 2 motor power supply	OUT	24 V
30	2	Ignition electrode power supply	OUT	230 V
31	2	Pump power supply	OUT	230 V
32	2	Zone 1 pump/electro-thermal control power supply	OUT	230 V
33	2	Zone 2 pump/electro-thermal control power supply	OUT	230 V
34	2	Pump/domestic hot water electro-thermal control power supply	OUT	230 V
35	2	Free output/future applications	OUT	230 V
36	2	Pump/puffer electro-thermal control power supply	OUT	230 V
37	2	Flow collector pump power supply	OUT	230 V
38	3	Puffer/boiler 3-way valve power supply	OUT	230 V
39	3	Free clamp	OUT	230 V
40	2	Auxiliary boiler power supply	OUT	230 V
41	2	Contact for aux. boiler	OUT	
42	3	Circuit board power supply input	IN	230 V
43	2	Aux. boiler probe	IN	
44	2	Pellet silos motor power supply	OUT	230 V
45	2	Lambda probe transformer power supply	OUT	230 V
46	2	Pellet heat safety thermostats input	IN	
47	2	Free clamp	/	
48	2	Motor reducer probe	IN	230 V

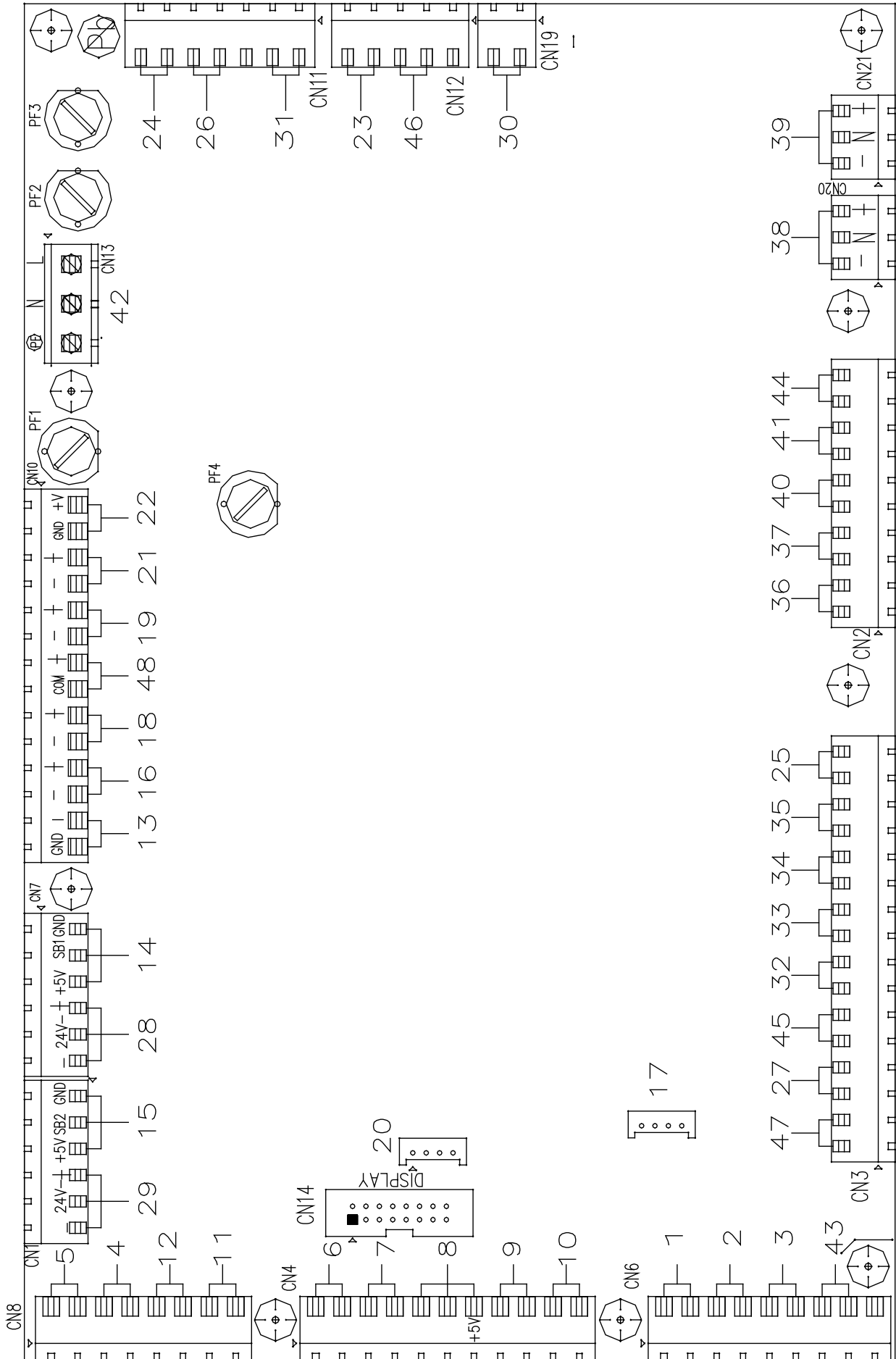


REVISION 001





Numbering	Description
29/15	Air valve 2
28/14	Air valve 1
16	Lambda probe
18	Flue gas temperature probe
20	Serial connector
50	Three pole power supply socket
42	Master bipolar switch
24	Flue gas intake motor
23	Pellet feeding motor reducer
85	Safety bulb thermostat at 85°C
100	Safety bulb thermostat at 100°C
30	Ignition electrode
25	Trapdoor motor
45	Lambda probe power supply
11	Trapdoor positioning micro switch
12	Door positioning micro switch
4	Boiler water temperature probe
5	Pellet duct temperature probe
17	Encoder connector
70	Pellet feeder motor reducer probe connector
60	Flue gas motor encoder connector
80	Pellet feeder motor reducer connector
48	Screw feed motor temperature probe
90	Fastom M/F connection power supply flue gas motor





Number	PIN	Connection description	Type	Voltage
1	2	Upper puffer probe	IN	
2	2	Domestic hot water storage probe	IN	
		Heat exchanger contact for instant domestic hot water (flow switch)		
3	2	Free input/future applications	IN	
4	2	Boiler water probe	IN	
5	2	Pellet duct probe	IN	
6	2	External probe	IN	
7	2	Lower puffer probe	IN	
8	2	Free input/future applications	IN	
9	2	Zone 1 external thermostat input	IN	
10	2	Zone 2 external thermostat input	IN	
11	2	Trapdoor position micro reducer input	IN	
12	2	Lower door micro reducer input	IN	
13	2	Upper door micro reducer input	IN	
14	3	Air valve 1 motor position signal	IN	
15	3	Air valve 2 motor position signal	IN	
16	2	Lambda probe	IN	
17	3	Encoder input - flue gas motor revs reading	IN	
18	2	Flue gas probe 300°C	IN	
19	2	Flue gas 1100 °C	IN	
20	4	Computer serial connection	IN	
21	2	24 DC Output	OUT	24 V DC
22	2	4.5 DC Output	OUT	4,5 V DC
23	2	Pellet feeder motor power supply	OUT	230 V
24	2	Flue gas suction motor power supply	OUT	230 V
25	2	Trapdoor motor power supply	OUT	230 V
26	2	Scraper motor power supply	OUT	230 V
27	2	Free output/future applications	OUT	230 V
28	3	Air valve 1 motor power supply	OUT	24 V
29	3	Air valve 2 motor power supply	OUT	24 V
30	2	Ignition electrode power supply	OUT	230 V
31	2	Pump power supply	OUT	230 V
32	2	Zone 1 pump/electro-thermal control power supply	OUT	230 V
33	2	Zone 2 pump/electro-thermal control power supply	OUT	230 V
34	2	Domestic hot water storage pump/electro-thermal control power supply	OUT	230 V
35	2	Free output/future applications	OUT	230 V
36	2	Pump/puffer electro-thermal control power supply	OUT	230 V
37	2	Flow collector pump power supply	OUT	230 V
38	3	Puffer/boiler 3-way valve power supply	OUT	230 V
39	3	Free clamp	OUT	230 V
40	2	Auxiliary boiler power supply	OUT	230 V
41	2	Contact for aux. boiler	OUT	
42	3	Circuit board power supply input	IN	230 V
43	2	Aux. boiler probe	IN	
44	2	Pellet silos motor power supply	OUT	230 V
45	2	Lambda probe transformer power supply	OUT	230 V
46	2	Pellet heat safety thermostats input	IN	
47	2	Free clamp	/	
48	2	Motor reducer probe	IN	230 V

Extraflame



EXTRAFLAME S.p.A.

Via Dell'Artigianato, 10
36030 MONTECCHIO PRECALCINO
Vicenza - ITALY
Tel. 0445/865911
Fax 0445/865912

<http://www.lanordica-extraflame.com>

E-mail: info@extraflame.com

Extraflame reserves the right to vary the features and data given in this document at any time without forewarning, in order to improve its products.

This manual, therefore, cannot be considered as a contract for third parties.

This document is available at www.extraflame.it/support

004275718 - INGLESE
Manuale schemi elettrici
REV 003 22.05.2009